



## Mounting Form Table

### S400 50A up to 63A

### Section

<b>Front Mounting Switches</b>	<b>A</b>
<b>Base Mounting Switches</b>	<b>B</b>

Sälzer Electric GmbH  
Matthiasstraße 16  
57482 Wenden (Germany)  
[www.saelzer.com](http://www.saelzer.com)

Headquarters:  
Tel. +49 (0) 27 62 / 6 14-110  
Fax +49 (0) 27 62 / 6 14-100  
[sales@salzer.de](mailto:sales@salzer.de)

**Originator: Sälzer Electric GmbH · Product Data Management (PDM) · 09306 Rochlitz (Germany)**  
Copyright reserved by Sälzer Electric GmbH. This document replaces all previous issues.  
Valid until a new version is published. Changes and revisions reserved.

## Mounting form table

Mtg. form	Page
002M1	B1-1 (7)
003M1	A1-1 (4)
013M1	A1-2 (5)
041M1	B1-2 (8)
042M1	B1-3 (9)



## Section A

Page  
from to

**Four hole mounting**

**A1-1**

**A1-2**

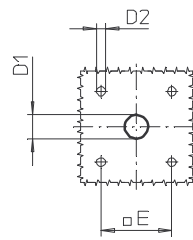
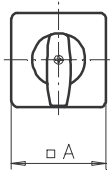
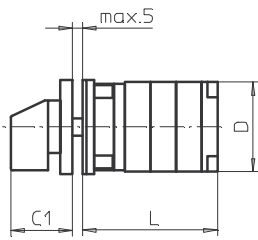
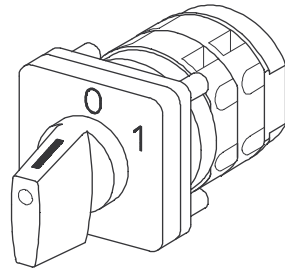
**Originator: Sälzer Electric GmbH · Product Data Management (PDM) · 09306 Rochlitz (Germany)**

Copyright reserved by Sälzer Electric GmbH. This document replaces all previous issues.

Valid until a new version is published. Changes and revisions reserved.

# Front Mounting Switches

# sälzer



**Product line**  
**S400**

**Front mounting switch**

**Four hole mounting**  
48 x 48 mm

**003M1 (IP55)**

Complete switch	Poles	Product lines	Rated data (IEC 60947)			Order code number
			Operational current I <sub>e</sub>	Operational power at 380–440 V		
			AC-21A A	AC-23A kW	AC-3 kW	
Rotary Cam Switches Switching angle 30°/45°/60°/90°	1 ... 24	S400	50 63	22 30	22 30	<b>S432 - 61 ... - 003M1</b> <b>S440 - 61 ... - 003M1</b>

### SMD modules for basic switch (GA A28/GA A28)

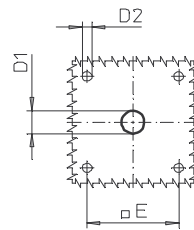
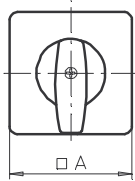
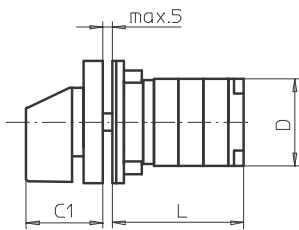
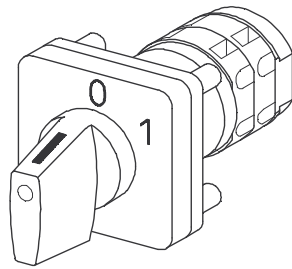
Mounting form module for 003M1	S400	<b>BFB4 - 003</b>
M-operator module 64 x 64 mm, mounting form 003M1 Starting position of the handle 09 h Escutcheon black, handle black		<b>4DM1</b>
M-operator module 64 x 64 mm, mounting form 003M1 Starting position of the handle 12 h Escutcheon black, handle black		<b>4EM1</b>
Legend plate silver, operator module 003M1		<b>FAS4 - .... (FA number)</b>

### Dimensions (mm)

Type	A	C1	D	D1	D2	E	L with ... stages (max. 12)							each add. stage
							1	2	3	4	5	6	7	
S432	64	39	65	12	5	48	51	69	87	105	123	141	159	18
S440	64	39	70	12	5	48	56	77	98	119	140	161	182	21

# Front Mounting Switches

**sälzer**



**Product line  
S400**

**Front mounting switch**  
Operator module of next size

**Four hole mounting**  
68 x 68 mm

**013M1 (IP55)**

Complete switch	Poles	Product lines	Rated data (IEC 60947)			Order code number
			Operational current I <sub>e</sub>	Operational power at 380–440 V		
			AC-21A A	AC-23A kW	AC-3 kW	
Rotary Cam Switches Switching angle 30°/45°/60°/90°	1 ... 24	S400	50 63	22 30	22 30	<b>S432 - 61 ... - 013M1</b> <b>S440 - 61 ... - 013M1</b>

## SMD modules for basic switch (GA A28)

Mounting form module for 013M1	S400	<b>BFB4 - 013</b>
M-operator module 88 x 88 mm, mounting form 013M1 Starting position of the handle 09 h Escutcheon black, handle black		<b>6AM1</b>
M-operator module 88 x 88 mm, mounting form 013M1 Starting position of the handle 12 h Escutcheon black, handle black		<b>6BM1</b>
Legend plate silver, operator module 013M1		<b>FAS6 - .... (FA number)</b>

## Dimensions (mm)

Type	A	C1	D	D1	D2	E	L with ... stages (max. 12)							each add. stage
							1	2	3	4	5	6	7	
S432	88	52	65	15	5,5	68	51	69	87	105	123	141	159	18
S440	88	52	70	15	5,5	68	56	77	98	119	140	161	182	21



## Section B

Page  
from to

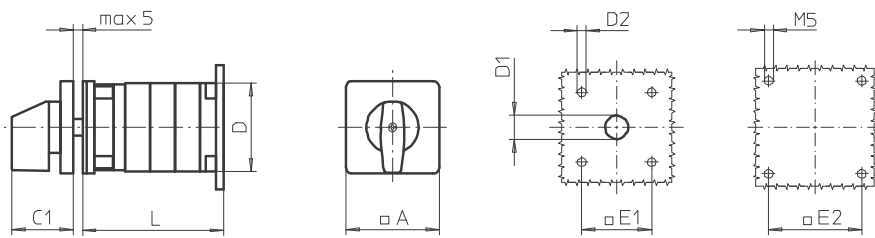
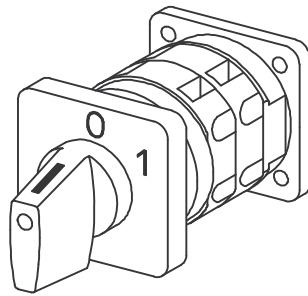
**Four hole mounting**

**B1-1**

**B1-3**

# Base Mounting Switches

# sälzer



**Product line**  
**S400**

**Base mounting switch**

**Base/front mounting**

**Four hole mounting**

48 x 48 mm front

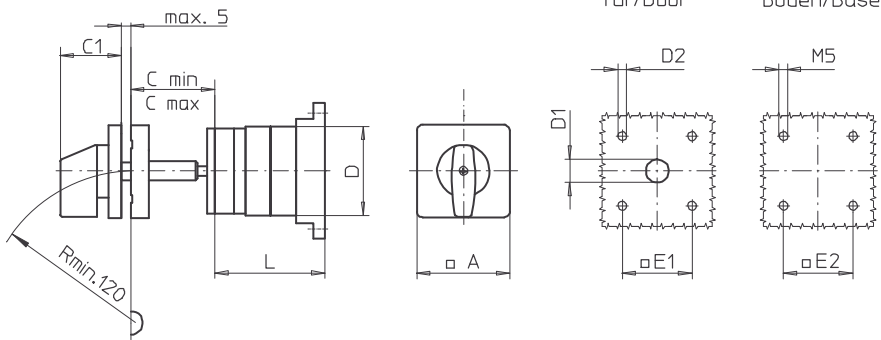
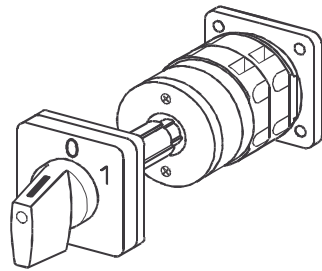
68 x 68 mm base

**002M1**

Complete switch	Poles	Product lines	Rated data (IEC 60947)			Order code number								
			Operational current I <sub>e</sub>	Operational power at 380–440 V										
			AC-21A A	AC-23A kW	AC-3 kW									
Rotary Cam Switches Switching angle 30°/45°/60°/90°	1 ... 24	S400	50 63	22 30	22 30	<b>S432 - 61 ... - 002M1</b> <b>S440 - 61 ... - 002M1</b>								
<b>SMD modules for basic switch (GA A28)</b>														
Mounting form module for 002M1			S400			<b>BFA4 - 002</b> <b>4DM1</b>								
M-operator module 64 x 64 mm, mounting form 002M1 Starting position of the handle 09h Escutcheon black, handle black						<b>4EM1</b>								
M-operator module 64 x 64 mm, mounting form 002M1 Starting position of the handle 12h Escutcheon black, handle black Legend plate silver, operator module 002M1						<b>FAS4 - .... (FA number)</b>								
<b>Dimensions (mm)</b>														
<b>Type</b>	<b>A</b>	<b>C1</b>	<b>D</b>	<b>D1</b>	<b>D2</b>	<b>E1</b>	<b>E2</b>	<b>L with ... stages (max. 12)</b>				<b>each add. stage</b>		
								<b>1</b>	<b>2</b>	<b>3</b>	<b>4</b>	<b>5</b>	<b>6</b>	
S432	64	39	65	12	5	48	68	56	74	92	110	128	146	18
S440	64	39	70	12	5	48	68	61	82	103	124	145	166	21

# Base Mounting Switches

# sälzer



**Product line**  
**S400**

**Base mounting switch**

**Door clutch**

**Four hole mounting**

48 x 48 mm front

68 x 68 mm base

**041M1 (IP55)**

Complete switch	Poles	Product lines	Rated data (IEC 60947)			Order code number
			Operational current I <sub>e</sub>	Operational power at 380–440 V		
			AC-21A A	AC-23A kW	AC-3 kW	
Rotary Cam Switches Switching angle 30°/45°/60°/90°	1 ... 24	S400	50 63	22 30	22 30	<b>S432 - 61 ... - 041M1</b> <b>S440 - 61 ... - 041M1</b>

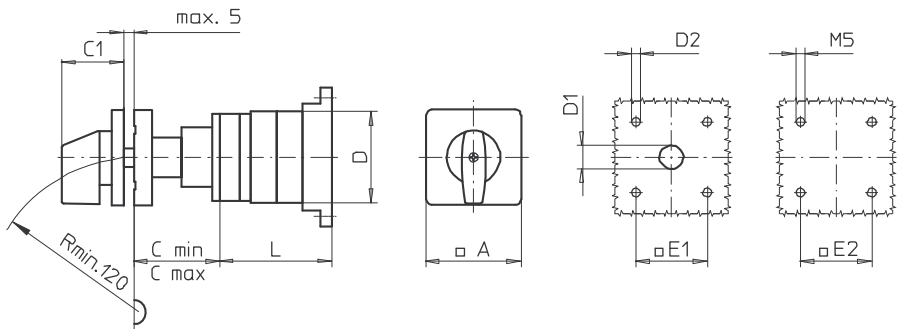
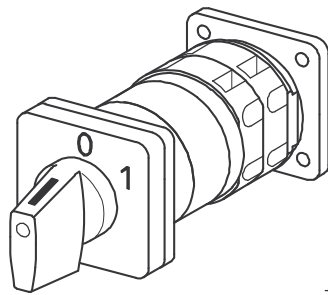
SMD modules for basic switch (GA A28)						
Mounting form module for 041M1					S400	<b>BFA4-041</b>
M-operator module 64 x 64 mm, mounting form 041M1						<b>4DM1</b>
Starting position of the handle 09 h						
Escutcheon black, handle black						
M-operator module 64 x 64 mm, mounting form 041M1						<b>4EM1</b>
Starting position of the handle 12 h						
Escutcheon black, handle black						
Legend plate silver, operator module 041M1						<b>FAS4 - .... (FA number)</b>

Dimensions (mm)											L with ... stages (max. 12) each add. stage			
Type	A	Cmin	Cmax	C1	D	D1	D2	E1	E2	1	2	3		
S432	64	42	56	39	65	15	5	48	68	51	69	87	18	
S440	64	42	56	39	70	15	5	48	68	56	77	98	21	



# Base Mounting Switches

**sälzer**



**Product line  
S400**

**Base mounting switch**

**Door interlock**

**Four hole mounting**

48 x 48 mm front

68 x 68 mm base

**042M1 (IP55)**

Complete switch	Poles	Product lines	Rated data (IEC 60947)			Order code number
			Operational current I <sub>e</sub>	Operational power at 380–440 V		
			AC-21A A	AC-23A kW	AC-3 kW	
Rotary Cam Switches Switching angle 30°/45°/60°/90°	1 ... 24	S400	50 63	22 30	22 30	<b>S432 - 61 ... - 042M1</b> <b>S440 - 61 ... - 042M1</b>

**SMD modules for basic switch (GA A28/GA A28)**

Mounting form module for 042M1	S400	<b>BFA4-042</b>
M-operator module 64 x 64 mm, mounting form 042M1 Starting position of the handle 09 h Escutcheon black, handle black		<b>4DM1</b>
M-operator module 64 x 64 mm, mounting form 042M1 Starting position of the handle 12 h Escutcheon black, handle black		<b>4EM1</b>
Legend plate silver, operator module 042M1		<b>FAS4 - .... (FA number)</b>

**Dimensions (mm)**

Type	A	Cmin	Cmax	C1	D	D1	D2	E1	E2	L with ... stages (max. 12) each add. stage			
										1	2	3	
S432	64	42	56	39	65	15	5	48	68	51	69	87	18
S440	64	42	56	39	70	15	5	48	68	56	77	98	21



## Faster deliveries through SMD

In order to ensure even greater flexibility for worldwide supply availability within 24h, Sälzer Electric has introduced the SMD (Sälzer Modular Design) system.

SMD modules are individually prefabricated and tested all-in-one modules which SMD Service holds in stock in sufficient quantities. From basic switch modules, mounting form modules and operator modules, SMD Service can assemble a complete switch requested by the customer and pack it ready for delivery in just a few actions.

– **back** –