

Switches for the future photovoltaic market

The relevance of renewable energy for UK and the world gains in importance each day – photovoltaic plays a prominent leading part in this process. To further the development of this market and to guarantee a safe handling of photovoltaic systems, Sälzer has advanced its DC rated disconnect switches. These are audited according to IEC 60947-3 and therefore applicable for every photovoltaic system conforming to IEC 60364-7-712:2002.

Maximum protection for photovoltaic systems

Semiconductor cells are the core component of a photovoltaic panel. Several panels combined make a PV string or solar module. Photons emitted by the sun generate direct current in the PV panels, which can be measured all the way down to the inverter box. For maintenance purposes or in case of emergencies, it is therefore necessary to disconnect the DC load (according to IEC 60364-7). This termination can either be achieved by using connectors or preferably DC rated disconnect switches. With their safe switching technology Sälzer DC disconnect switches ensure maximum protection in photovoltaic systems.

We are constantly aiming to expand our range on DC rated switches through new developments.

Salzer UK Limited
44 Edison Road
Aylesbury Bucks.
HP19 8TE

Telephone 01296 399992
Ext. Sales Team 07836 380439
Int. Sales Team 01296 392262
Techn. Support 01296 392595
Fax 01296 392229

info@salzeruk.co.uk
www.salzeruk.co.uk

For detailed information please contact our distribution centre.

Info

Switch on the sun!

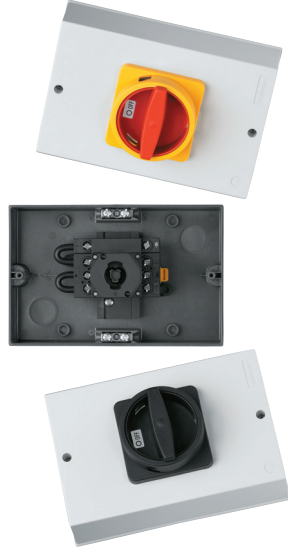
Sälzer load breaking switches for your photovoltaic system



Load breaking switches for photovoltaic

Polycarbonate Enclosures

- IP66 insulated enclosure (polycarbonate)
- With N-padlock device
- Main/Emergency-Off Switch (yellow/red) or Main Switch (black)



250 V DC	450 V DC	500 V DC	650 V DC	800 V DC	Enclosure size	Main Switch (N-padlock device black)	Main/Emergency-Off Switch (N-padlock device yellow/red)
32 A	20 A	16 A			175 x 115 x 100 mm	H226-81400-710N1	H226-81400-710N4
		20 A			175 x 115 x 100 mm	H233-81400-710N1	H233-81400-710N4
	25 A				175 x 115 x 100 mm	H233-81500-710N1	H233-81500-710N4
		25 A			175 x 115 x 100 mm	B250-81500-710N1	B250-81500-710N4
	32 A				175 x 115 x 100 mm	B250-81400-710N1	B250-81400-710N4
			20 A		175 x 115 x 100 mm	H226-81600-720N1	H226-81600-720N4
		32 A	25 A		250 x 160 x 120 mm	B240-81600-761N1	B240-81600-761N4
		32 A	32 A		250 x 160 x 120 mm	B250-81600-761N1	B250-81600-761N4
			63 A		320 x 220 x 180 mm	H408-81700-977N1	H408-81700-977N4
				20 A	250 x 160 x 120 mm	H226-81800-761N1	H226-81800-761N4
			25 A	25 A	280 x 190 x 130 mm	B240-81800-740N1	B240-81800-740N4
			32 A	32 A	280 x 190 x 130 mm	B250-81800-740N1	B250-81800-740N4
			50 A	50 A	320 x 220 x 180 mm	H408-81800-977N1	H408-81800-977N4

Base Mounting Switches

- For panel applications and distribution boards
- Padlockable with V-handle
- Main/Emergency-Off Switch (yellow/red) or Main Switch (black)



250 V DC	450 V DC	500 V DC	650 V DC	800 V DC	Main Switch (Padlockable with V-handle black)	Main/Emergency-Off Switch (Padlockable with V-handle yellow/red)
32 A	20 A	16 A			H226-81400-026V1	H226-81400-026V4
		20 A			H233-81400-026V1	H233-81400-026V4
	25 A				H233-81500-026V1	H233-81500-026V4
		25 A			B250-81500-026V1	B250-81500-026V4
	32 A				B250-81400-026V1	B250-81400-026V4
			20 A		H226-81600-026V1	H226-81600-026V4
		32 A	25 A		B240-81600-026V1	B240-81600-026V4
		32 A	32 A		B250-81600-026V1	B250-81600-026V4
			63 A		H408-81700-126V1	H408-81700-126V4
				20 A	H226-81800-026V1	H226-81800-026V4
			25 A	25 A	B240-81800-026V1	B240-81800-026V4
			32 A	32 A	B250-81800-026V1	B250-81800-026V4
			50 A	50 A	H408-81800-126V1	H408-81800-126V4

All load breaking switches from Sälzer switch the plus(+) and minus(-) pole simultaneously.